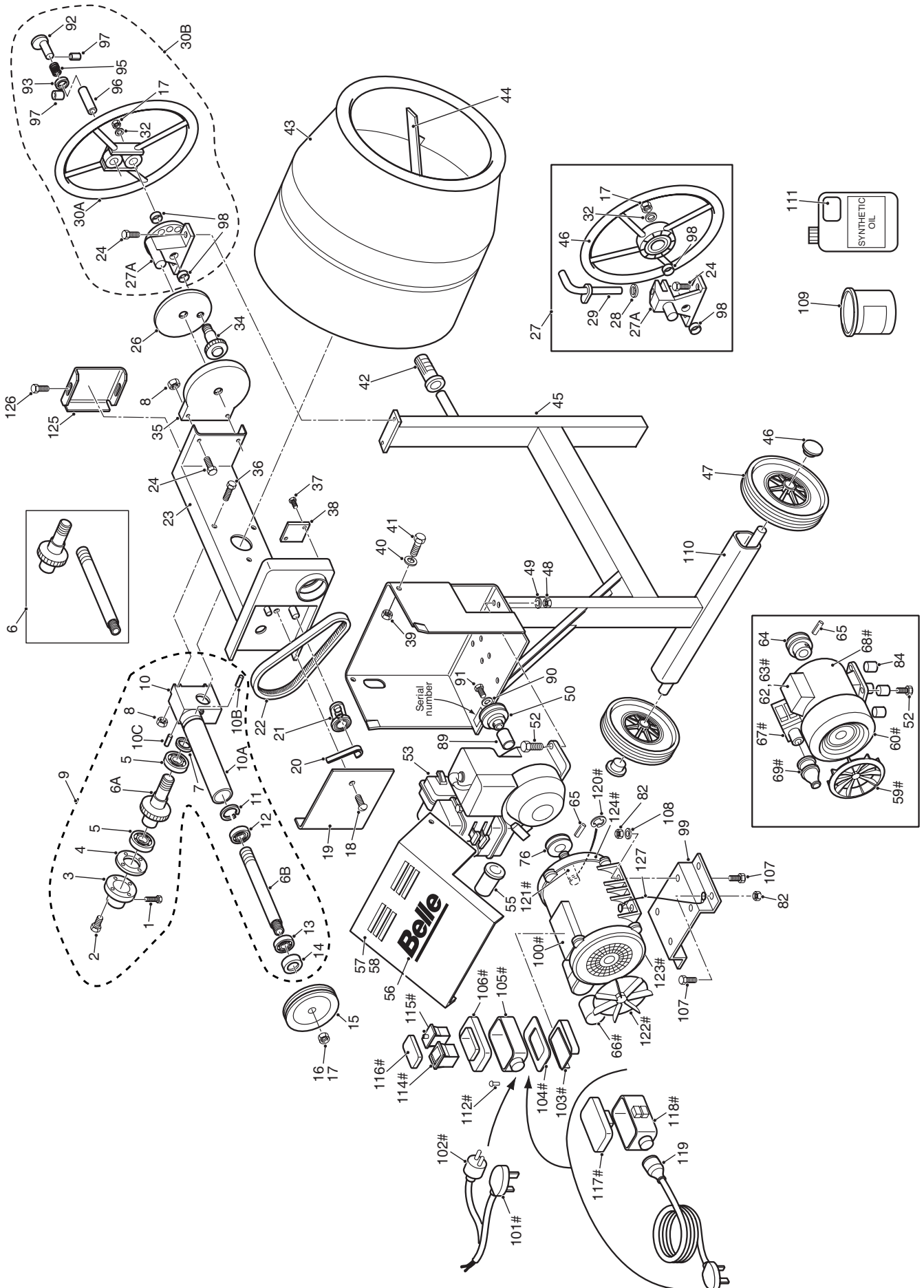


Maxi 140



- ⚠ **CAUTION:** PARTS WITH A # SHOULD ONLY BE FITTED BY A QUALIFIED ELECTRICIAN.
- ⚠ **PRECAUCION:** LAS PARTES MARCADAS CON # SOLO DEBEN INSTALARSE POR UN ELECTRICISTA CAPACITADO.
- ⚠ **VARNING:** KOMPONENTER MED A # BÖR ENDAST MONTERAS AV EN UTBILDAD ELEKTRIKER.

Maxi 140

ITEM NUMBER	PART NUMBER	DESCRIPTION	ITEM NUMBER	PART NUMBER	DESCRIPTION
1	XS01	FILLER BUNG	60A	CMS08	FAN COWL CLIP
2	9-8012	BOLT (M8 X 20)	62	CMS17	CAPACITOR COVER
3	902/13702	COVER	63	CMS29	CAPACITOR (110V SILVER)
4	XS27	GASKET	64	MS17	PULLEY (5/8" BORE)
5	CMS10	BEARING (6006)	64A	CMS64	PULLEY (60HZ)
6	XS40	KIT WORM & MAINSHAFT	65	7-6008	GRUB SCREW (M6 X 8)
6A	XS03	MAINSHAFT	66	CMS21	CAPACITOR - 240V WHITE (→ 011633)
6B	XS26	WORMSHAFT	66	70-0135	CAPACITOR - 240V WHITE (→ 011634)
7	CMS11	OILSEAL	67	CMS63	SWITCH BOX NVR (110V)
8	8-10003	NUT	68	CMS02	MOTOR C/W PULLEY (110V-50HZ)
9	902/14100	GEARBOX ASSEMBLY KIT	69	900-15200	COUPLER (110V)
10	XS37	GEARBOX CASE	76	902-11300	PULLEY - M30 (→ 011633)
10A	XS23	WORMSHAFT TUBE	76	XS16-1	PULLEY (→ 011634)
10B	XS04	SPIROL PIN (→ 011916)	82	8-8008	NUT M8 NYLOC
10C	7/6031	GRUBSCREW M6 x 12 (→ 011917)	84	XS17	SPACER
11	XS05	CIRCLIP	89	XS16-2	SPACER (HONDA)
12	XS31	BEARING (6005)	90	4-8004	WASHER (M8)
13	PS013	BEARING (6004)	91	9-0002	BOLT (5/16 X 5/8 UNF)
14	CMS40	OILSEAL	92	902-10500	PLUNGER
15	CMS39	PULLEY	93	902-10600	RETAINER SPRING
16	9-12008	BOLT (M12 X 20)	95	2-0004	SPRING
17	8-12002	NUT (M12)	96	50-000038	BUSH
18	7-6010	SCREW (M6 X 35)	97	3-0020	ROLL PIN (3 X 14)
19	XS22	BELT GUARD	98	50-000035	BUSH
20	XS19	JOCKEY SPRING	99	902-11400	MOTOR DECK M30 (→ 011633)
21	XS20	JOCKEY	99	902-99902	MOTOR DECK (→ 011634)
22	XS21	BELT (A30)	100	900-20400	KIT MOTOR M30 NVR (240V) (→ 011633)
22A	902-13300	BELT (60HZ)	100	20-0082	MOTOR (230V 50Hz) (→ 011634)
23	XS08	YOKE	100	900-17500	MOTOR M30 (220V)
24	7-10004	SCREW (M10 X 20)	100	900-17800	MOTOR NVR (220V CEE7)
25	👁 8		101	900-18800	3 PIN PLUG & CABLE (240V)
26	XS11	TIP GEAR COVER	102	900-18900	2 PIN PLUG & CABLE (220V)
27	👁 30B		103	900-19200	ADAPTOR PLATE
27A	902-11000	TIP GEAR BRACKET	104	900-19600	GASKET
28	XS38	WASHER (8MM)	105	900-19600	SWITCH BOXBASE
29	XS36	LOCKING PIN	106	900-18500	LID ASSEMBLY (220V & 240V)
30	👁 30B		107	900-18400	SET SCREW (M8 x 16) (→ 011633)
30A	902-11100	HANDWHEEL	107	7-8011	SET SCREW (M8 x 20) (→ 011634)
30B	902-13100	KIT HANDWHEEL	108	4-8008	WASHER (5/16" X 1") (→ 011633)
31	👁 17		108	4-8006	WASHER (M8) (→ 011634)
32	4-1205	WASHER (M12)	109	1-0519	PAINT - 1 LITRE TIN (ORANGE)
33	👁 24		109A	1-0507	PAINT - SPRAY (ORANGE)
34	XS10	TIP GEAR	110	XS14-8	AXLE
35	XS09	GEAR RING	111	1-0474	SYNTHETIC OIL - 5 LITRE DRUM
36	9-10009	BOLT (M10 x 45) (→ 011916)	112	900-19100	RIVET
36A	7/10009	SCREW (M10 x 40) (→ 011917)	113	900-19000	SWITCH SCREW
37	7-6011	SET SCREW (M6 X 10)	114	CMS27	ROCKER SWITCH (240V WHITE)
38	XS41	COVER PLATE	115	900-18700	OVERLOAD (4 AMP)
39	8-6002	NUT (M6)	116	900-18600	SWITCH COVER & RING
40	4-6002	WASHER (M6)	117	900-19300	LID ASSEMBLY NVR (220V & 240V)
41	7-6001	SET SCREW (M6 X 12)	118	900-19400	SWITCH BOX BASE (240V CEE7)
42	XS35	HANDLE GRIP	119	900-18100	EXTENSION CABLE (240V) (→ 011633)
43	CMS12	DRUM	120	600-03150	CIRCLIP
44	CMS13	PADDLE KIT	121	900-15000	MOTOR SHAFT SLEEVE
45	902-10100	MAINFRAME	122	900-16500	FAN (M30 MOTOR)
46	CMS16	AXLE CAP	123	900-16800	FAN COVER
47	60-0286	WHEEL	124	900-16700	MOTOR COVER (PULLEY END)
48	8-8001	NUT (M8)	125	902-13500	YOKE GUARD
49	4-8002	WASHER (M8)	126	7-5006	SCREW (M5 X 16)
50	MS18	PULLEY (3/4" BORE)	127	71-0250	CABLE EARTH
50A	XS16	PULLEY (HONDA)	902-10900	DECAL OPERATING	
50B	MS17	PULLEY (B & S VANGUARD)	800-99912	DECAL SAFETY	
52	9-8003	BOLT (M8 X 35)	800-21310	DECAL DANGER ZONE (UK)	
52A	7-8008	SCREW (M8 X 16) (B & S VANGUARD)	800-21314	DECAL DANGER ZONE (EURO 3)	
53	CMS19	ENGINE (BRIGGS & STRATTON)			
53A	902-13200	ENGINE (HONDA)			
53B	20-0080	ENGINE (B & S VANGUARD)			
55	XS29	EXHAUST			
55A	902-14000	EXHAUST (B & S VANGUARD)			
56	800-03100	DECAL MAXI 140			
57	XS18	LID (→ A91)			
58	XS33	LID			
59	CMS24	FAN (110V & 240V)			
60	CMS25	FAN COWL (110V & 240V)			