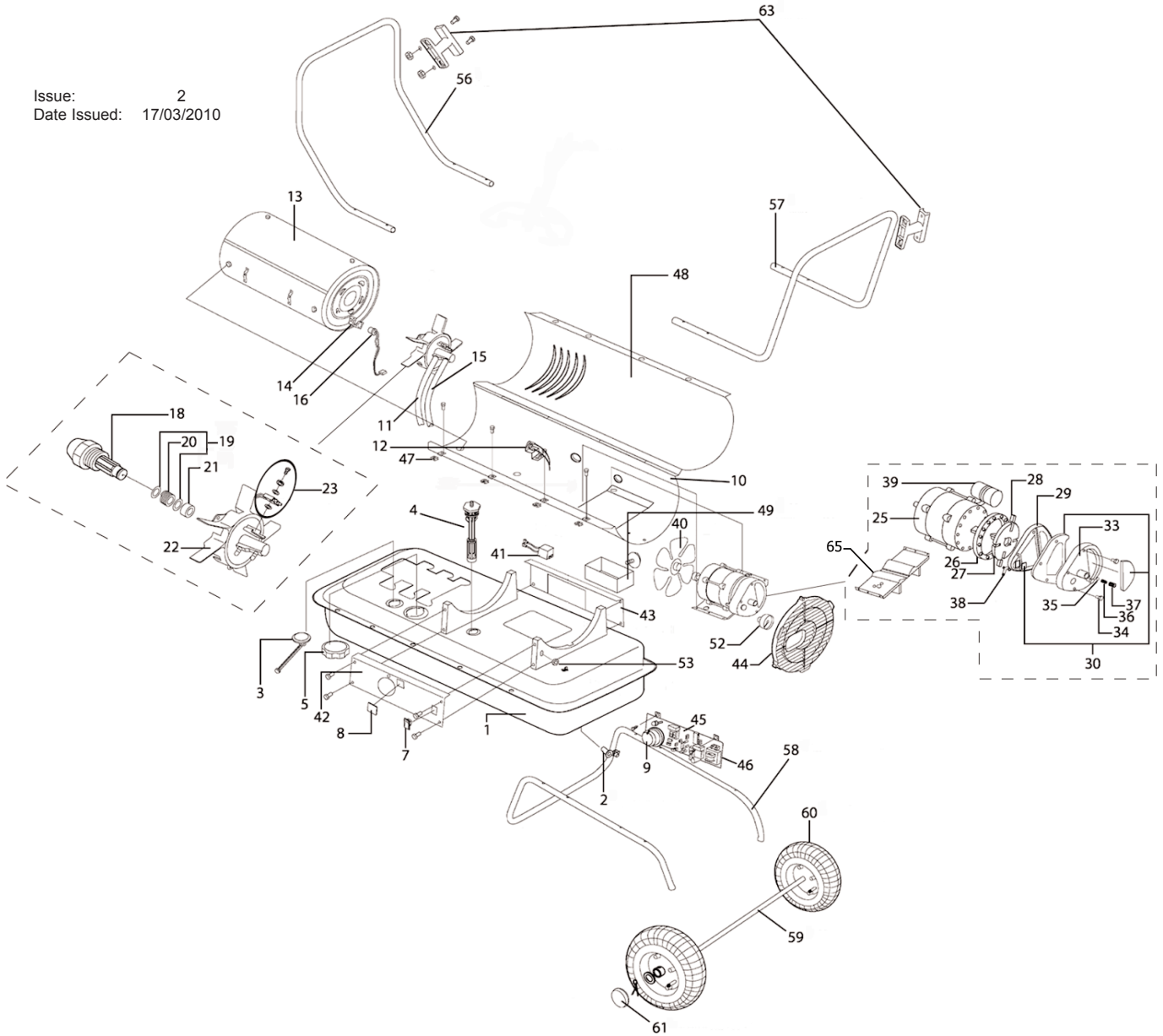


Issue: 2
 Date Issued: 17/03/2010



NOTE: It is our policy to continually improve products and as such we reserve the right to alter data, specifications and component parts without prior notice.

IMPORTANT: No liability is accepted for incorrect use of product.

WARRANTY: Guarantee is 12 months from purchase date, proof of which will be required for any claim.

INFORMATION: For a copy of our latest catalogue and promotions call us on 01284 757525 and leave your full name and address, including postcode.

PARTS LIST

ITEM	AB1008	AB1258	AB1758	AB2158	DESCRIPTION
1	P70-002-0210	P70-002-0210	P70-002-0310	P70-002-0310	FUEL TANK ASSEMBLY
2	P70-002-0106	P70-002-0106	P70-002-0106	P70-002-0106	DRAIN PLUG
3	P70-007-0210	P70-007-0210	P70-007-0210	P70-007-0210	FUEL GAUGE ASS'Y
4	P70-003-0210	P70-003-0210	P70-003-0210	P70-003-0210	FUEL FILTER ASS'Y
5	P70-006-0110	P70-006-0110	P70-006-0110	P70-006-0110	FUEL CAP ASSEMBLY
7	P70-038-0110	P70-038-0110	P70-038-0110	P70-038-0110	POWER SWITCH
8	P70-040-0110	P70-040-0110	P70-040-0110	P70-040-0110	WINDOW DISPLAY
9	P70-031-0110	P70-031-0110	P70-031-0110	P70-031-0110	THERMOSTAT CONTROL KNOB
10	P70-001-1622	P70-001-1622	P70-001-1632	P70-001-1632	LOWER COVER
11	P70-035-0310	P70-035-0310	P70-035-0410	P70-035-0510	AIR LINE
12	P70-019-0101	P70-019-0101	P70-019-0101	P70-019-0101	TEMPERATURE LIMIT SWITCH
13	P70-011-0310	P70-011-0310	P70-011-0410	P70-011-0510	COMBUSTION CHAMBER
14	P70-010-0102	P70-010-0102	P70-010-0102	P70-010-0102	FLAME SENSOR BRACKET
15	P70-036-0310	P70-036-0310	P70-036-0410	P70-036-0510	FUEL LINE
16	P70-016-0110	P70-016-0110	P70-016-0110	P70-016-0110	FLAME SENSOR ASSY
18	P70-015-0310	P70-015-0310	P70-015-0410	P70-015-0510	NOZZLE
19	P70-015-0110	P70-015-0110	P70-015-0110	P70-015-0110	NOZZLE SEAL WASHER
20	P70-015-0111	P70-015-0111	P70-015-0111	P70-015-0111	NOZZLE SEAL SPRING
21	P70-015-0112	P70-015-0112	P70-015-0112	P70-015-0112	NOZZLE SLEEVE
22	P70-014-0302	P70-014-0302	P70-014-0402	P70-014-0402	BURNER HEAD
23	P70-052-0210	P70-052-0210	P70-052-0210	P70-052-0210	SPARK PLUG KIT
25	P70-021-0215	P70-021-0215	P70-021-0415	P70-021-0415	MOTOR
26	P70-020-0411	P70-020-0411	P70-020-0411	P70-020-0411	PUMP BODY
27	P70-022-0130	P70-022-0130	P70-022-0130	P70-022-0130	ROTOR
28	P70-022-0145	P70-022-0145	P70-022-0145	P70-022-0145	ROTOR BLADE (set of 4)
29	P70-020-0120	P70-020-0120	P70-020-0120	P70-020-0120	END PUMP COVER
30	P70-054-0150	P70-054-0150	P70-054-0150	P70-054-0150	FILTER KIT
33	P70-020-0103	P70-020-0103	P70-020-0103	P70-020-0103	END FILTER COVER
34	P70-055-0110	P70-055-0110	P70-055-0110	P70-055-0110	PLUG/PUMP ADJUST KIT
35	P70-020-0125	P70-020-0125	P70-020-0125	P70-020-0125	STEEL BALL
36	P70-020-0126	P70-020-0126	P70-020-0126	P70-020-0126	SPRING
37	P70-020-0106	P70-020-0106	P70-020-0106	P70-020-0106	ADJUSTING SCREW
38	P70-020-0420	P70-020-0420	P70-020-0420	P70-020-0420	NIPPLE
39	P70-020-0131	P70-020-0131	P70-020-0131	P70-020-0131	CAPACITOR
40	P70-024-0310	P70-024-0310	P70-024-0410	P70-024-0410	FAN ASSEMBLY
41	P70-037-0320	P70-037-0320	P70-037-0320	P70-037-0320	IGNITOR
42	P70-008-0250	P70-008-0301	P70-008-0401	P70-008-0451	RIGHT SIDE COVER
43	P70-009-0210	P70-009-0210	P70-009-0310	P70-009-0310	LEFT SIDE COVER
44	P70-016-0210	P70-016-0210	P70-016-0210	P70-016-0210	FAN GUARD
45	P70-027-0320	P70-027-0320	P70-027-0320	P70-027-0320	MAIN PCB ASSEMBLY
46	P70-027-0120	P70-027-0120	P70-027-0120	P70-027-0120	FUSE
47	P70-001-0106	P70-001-0106	P70-001-0106	P70-001-0106	CLIP NUT
48	P70-001-1621	P70-001-1621	P70-001-1631	P70-001-1631	UPPER COVER
49	P70-053-0110	P70-053-0110	P70-053-0110	P70-053-0110	STORAGE BOX
52	P70-025-0110	P70-025-0110	P70-025-0110	P70-025-0110	AIR PRESSURE GAUGE
53	P70-033-0210	P70-033-0210	P70-033-0210	P70-033-0210	CORD BUSHING
56	P70-042-0110	P70-042-0110	P70-042-0210	P70-042-0210	FRONT HANDLE
57	P70-043-0110	P70-043-0110	P70-043-0200	P70-043-0200	BACK HANDLE
58	P70-041-0101	P70-041-0101	P70-041-0202	P70-041-0202	WHEEL SUPPORT FRAME
59	P70-041-0115	P70-041-0115	P70-041-0115	P70-041-0115	WHEEL AXLE
60	P70-041-0150	P70-041-0150	P70-041-0150	P70-041-0150	WHEEL (PNEUMATIC)
61	P70-041-0016	P70-041-0016	P70-041-0016	P70-041-0016	WHEEL CAP
--	P70-056-0230	P70-056-0230	P70-056-0230	P70-056-0230	HARDWARE KIT (Not Shown)
63	P70-034-0240	P70-034-0240	P70-034-0240	P70-034-0240	CORD WRAP
--	P70-001-0204	P70-001-0204	P70-001-0304	P70-001-0304	HINGE PIN FOR UPPER & LOWER COVER (Not Shown)
65	P70-020-0250	P70-020-0250	P70-020-0404	P70-020-0404	SUPPORT PLATE

NOTE: It is our policy to continually improve products and as such we reserve the right to alter data, specifications and component parts without prior notice.

IMPORTANT: No liability is accepted for incorrect use of product.

WARRANTY: Guarantee is 12 months from purchase date, proof of which will be required for any claim.

INFORMATION: For a copy of our latest catalogue and promotions call us on 01284 757525 and leave your full name and address, including postcode.